

Fast, ultra-slim
scanner for
mobile executives
and home users

P-208II

Portable document scanner
(with optional WU10 Wi-Fi unit)

you can







imageFORMULA

Canon



With its 10-sheet ADF, high speed duplex scanning capability and optional Wi-Fi connectivity, this is the ideal scanner to maximise your productivity wherever work takes you.

The lightweight and ultra-portable P-208II scanner's footprint is barely larger than a standard ruler. So it's the perfect choice for mobile executives and home users.

			
B&W SPEED	COLOUR SPEED	DAILY DUTY CYCLE	AUTOMATIC DOCUMENT FEEDER
8ppm/16ipm	8ppm/16ipm	100 scans/day	10 sheets

No-compromise mobile scanning

The imageFORMULA P-208II provides travelling executives or office users with impressively fast double-sided colour scanning of up to 16ipm at 200dpi. Maintain productivity on the move with the integrated 10-sheet ADF, which enables easy batch scanning of multiple documents like contracts in a single operation. Weighing just 600g, and little longer or wider than a standard ruler, the P-208II is small and light enough to take anywhere. For maximum flexibility, the P-208II is compatible with Mac and PC computers, as well as Apple iOS and Android mobile devices.*

* When connected to the WU10 accessory.



Ultra-slim and lightweight

Plug-and-scan convenience with CaptureOnTouch Lite

By using the selectable 'auto-start' feature – just connect with a USB cable and start scanning! CaptureOnTouch Lite software is built into the P-208II so there is no need to download additional drivers or software, it's simply plug-and-scan.

Intuitive image processing

A rich selection of built-in image processing features help you achieve high quality results. The P-208II offers auto colour detection, text orientation recognition and text enhancement to optimise your scanned images; the full auto mode feature automatically applies the ideal settings for your documents while delivering super-fast results.

Scan all types of document

The P-208II is the perfect accessory for both home and business use because it's capable of scanning such a wide range of media. Business users can capture regular A4 sized documents like contracts or irregular-sized media like business/embossed cards when they're out of the office.

Home users will also enjoy using the P-208II, because it's perfect for scanning household bills; while the picture mode feature is ideal for accurately scanning old photographs.



10 sheet document feeder, with double-sided scanning

Scan wirelessly to smart devices with the optional Wi-Fi unit WU10 – it's the perfect companion for the P-208II for scanning directly to mobile, tablet and PC devices.



Optional Wi-Fi unit WU10

The Wi-Fi unit WU10 enables wireless scanning to mobile devices without the need to connect via cable to a network point. Businesses can also set-up wireless scanning to desktop PCs with the Wireless Connection Setup Tool and Network Monitor software. The WU10 comes with a rechargeable Lithium-ion battery and when fully charged you can scan up to 400 images. Simply connect via USB to your Canon mobile scanning device and enjoy fast mobile scanning anytime, anywhere.

CaptureOnTouch Mobile App

Scan direct to your iPhone®, iPad® and Android device with the free CaptureOnTouch Mobile App. It comes with advanced image processing tools such as automatic size detection, deskew and skip blank page – giving consistently superior image quality results.

Download the free CaptureOnTouch Mobile App from Google Play (Android user) or the Apple App Store (iOS user).

Powerful, intuitive software that enhances your productivity



The P-208II is the perfect partner for both Mac and Windows devices. A superb range of desktop software helps you gain maximum productivity from your scanner.

CaptureOnTouch

Intuitive capture software that makes it quick and simple to achieve premium quality results. CaptureOnTouch incorporates an icon-based user interface with scanning to multiple file formats including PDF, PDF-A, TIFF, JPEG, BMP, PPTX and PNG. CaptureOnTouch can also send captured information directly to data management systems (compatible with both Windows and Mac).

Cloud service plug-ins

The CaptureOnTouch and CaptureOnTouch Lite software includes plug-ins for connecting to cloud and ECM services such as Evernote, Google Drive™, Microsoft SharePoint®, SugarSync, OneDrive (Windows only) and Dropbox.



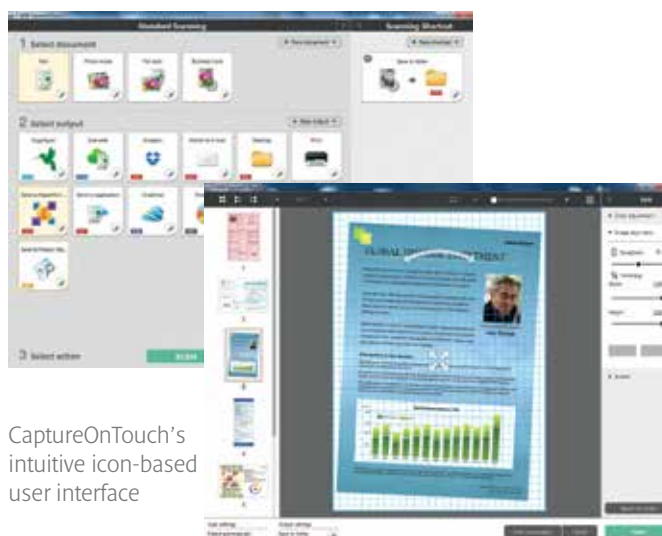
Enhanced cloud connectivity

CaptureOnTouch Lite

Offers unique portability and convenience on the move. The software is built into the P-208II allowing for fast and effortless connectivity without the need to install any drivers or application software (compatible with both Windows and Mac).

Presto! BizCard

Scan business cards to convert and organise important information into a searchable database (compatible with both Windows and Mac).



CaptureOnTouch's intuitive icon-based user interface

Specifications for imageFORMULA P-208II

Type Document Reading Sensor Optical Resolution Light Source Reading Side Interface Dimensions Weight Power Requirements Power Consumption Operating Environment Environmental Compliance	Desktop Type Sheet Fed Scanner CMOS CIS 2 Line Sensor 600dpi RGB LED Front / Back / Duplex High Speed USB 2.0 Tray Closed: 312.5 (W) x 56.5 (D) x 40 (H)mm Tray Opened: 312.5 (W) x 89.5 (D) x 40 (H)mm Approx. 600g Supply from USB (500mA) Scanning: 2.5W, Sleep Mode: 1.5W, Power Turned Off: 0.5W 10 - 32.5°C (50 - 90.5°F), Humidity: 25 - 80% RH RoHS and ENERGY STAR		
READING SPEED¹	P-208II		
(A4, Portrait)		Simplex	Duplex
B&W / Greyscale Colour	200dpi / 300dpi 200dpi 300dpi	8ppm 8ppm 6ppm	16ipm 16ipm 12ipm
DOCUMENT SPECIFICATIONS	Width 50.8 - 216mm Length 70 - 356mm Thickness 52 - 209g/m ² (0.06 - 0.22mm) Card Scanning 54 x 86 x 1.4mm (Embossed card scanning is supported) Paper Separation Separation Pad Method Feeder Capacity 10 sheets (64g/m ²)		
OUTPUT	Resolution 150 x 150dpi, 200 x 200dpi, 300 x 300dpi, 400 x 400dpi, 600 x 600dpi Mode Black & White, Advanced Text Enhancement II, 8-Bit Greyscale: (256-Level), 24-Bit Colour		

SPECIAL FEATURES	Automatic Page Size Detection, Deskew, 3-Dimensional Colour Correction, Auto Colour Detection, Shading Correction, Text Enhancement, Preset Gamma Curve, Scan Panel, Prescan, Image Rotation, Skip Blank Page, Select Scanning Document Side, Scan Area Setting, Text Orientation Recognition, Continuous Scanning, Edge Enhancement, Moire Reduction, Prevent Bleed Through / Remove Background, Contrast Arrangement, Background Smoothing, Shadow Cropping (on / off switchable), Trimming, Apply Corrections Suitable For Photographs, Double Feed Detection (By Length)
BUNDLED SOFTWARE For Windows OS	ISIS / TWAIN Driver (Windows XP Pro / XP Home / VISTA / 7 / 8) CaptureOnTouch ² CaptureOnTouch Lite ² Presto! BizCard Reader Plug-in: Evernote, Google Drive™, Microsoft SharePoint®, SugarSync, OneDrive and Dropbox
For Mac OS	TWAIN Driver CaptureOnTouch ² CaptureOnTouch Lite ² Presto! BizCard Reader Plug-in: Evernote, Google Drive™, Microsoft SharePoint®, SugarSync, Dropbox
Options	Canon Wi-Fi Unit WU10 Silex C-6600GB Scan-and-Print Server Carry Case
Consumables Suggested Daily Duty Cycle	Separation Pad 100 scans/day

¹ Scanning speeds may vary depending on the specification of the PC / Mac and the setting of functions.

² Software Developer Kits are available through the Canon Business Solutions Developer Programme - www.canon.europe.com/bsdp

Some images are simulated for clarity of reproduction. All data is based on Canon's standard testing methods. This leaflet and the specifications of the product have been developed prior to the date of product launch. Final specifications are subject to change without notice. ™ and ©, all company and / or product names are trademarks and / or registered trademarks of their respective manufacturers in their markets and / or countries.

Specifications for Optional Wi-Fi Unit WU10

Type Dimensions: (W x D x H) Weight Interface	Optional Wi-Fi and power supply unit 125 x 71 x 31.7mm Main unit: 125g / Battery: 44.5g USB host for scanner connection IEEE802.11b/g/n
POWER SUPPLY Scans per Charge: (A4, 200dpi, Colour) Power consumption	AC Adaptor or Lithium-ion battery 400 images (at full charge) Maximum power: 13.2W / Power off mode: 0.5W

WI-FI SPECIFICATIONS	Access point mode / Station mode IEEE802.11b: Max 11Mbps IEEE802.11g: 54Mbps IEEE802.11n: 300Mbps 2.4GHz WPA-PSK (TKIP / AES) WPA2-PSK (TKIP / AES) WEP (64 / 128bit) WPS (Wi-Fi Protected set-up) Supported
Operation Mode Data Rate: (Theoretical Values) Frequency Wi-Fi Security	
BUNDLED SOFTWARE For Mac and Windows Mobile OS Support Consumable	Canon Wireless Connection Setup Tool, Network Monitor Mobile apps available for Android and Apple iOS Lithium-ion Battery Pack LP-E10



Canon Electronics Inc
canon.com

Canon Europe
canon-europe.com

English Edition
© Canon Europa N.V., 2014

Canon Europe Ltd
3 The Square
Stockley Park
Uxbridge
Middlesex
UB11 1ET
United Kingdom